



luxuriously appointed
and yet relaxed,
this dramatic villa
features a soaring
25 foot vaulted ceiling
in the great room and
an expansive terrace
for entertaining



- Unobstructed oceanview
- Over 4065 square feet of air-conditioned living space
- Total covered area 5732 s.f.
- 4 bedroom / 5.5 bath
- 25' high vaulted ceiling in great room
- 36' wide view from great room
- Signature pool with pool room

Lot 6

Offered at US\$3,400,000 furnished
Ready for Occupancy

The Kingfisher

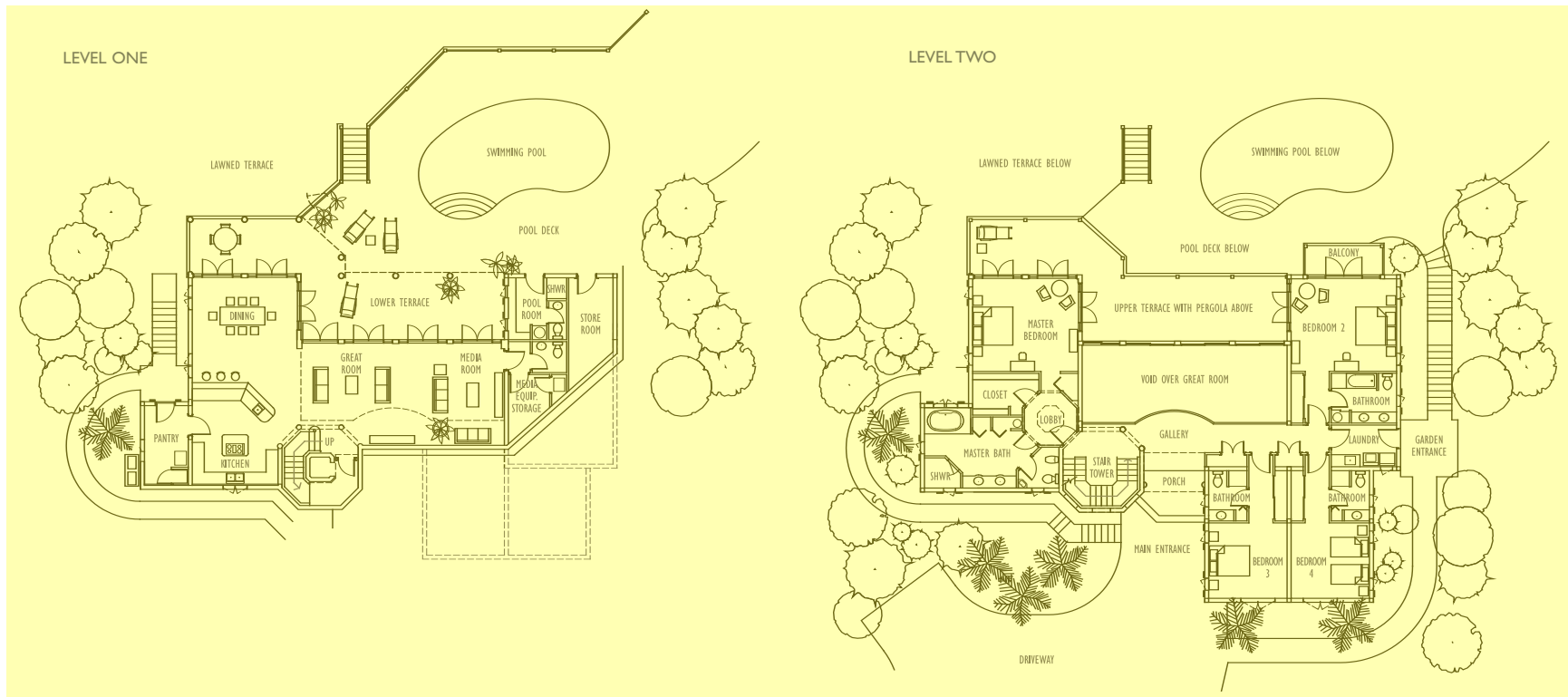
A modern West Indies classic, The Kingfisher is beautifully situated on a hillside half acre of paradise with unobstructed ocean views. This elegant new home is scheduled for completion in 2006. The Kingfisher has been designed by renowned architects, John Redmond Associates. With more than 4,000 sq. ft. of exquisitely finished indoor living space The Kingfisher boasts 10 foot ceilings throughout and a spectacular great room with ceilings soaring to 25 feet. The vaulted ceiling and open plan of this elegant villa bring the spectacular north shore view right to your feet.

The Kingfisher has four spacious bedrooms all with ensuite bathrooms, the two large master suites face the ocean providing breathtaking views and cooling gentle ocean breezes. Other highlights include a gourmet kitchen with a large walk-in pantry, a wine cellar, a dining room facing the ocean, lush eco-friendly landscaping, security system, wiring for high-speed internet and satellite TV and covered parking. Further enhancing your tropical dream, The Kingfisher has expansive outdoor terraces, a designer pool with outdoor kitchen and wet bar. Combined this open floor plan provides almost 6000 sq. ft. of elegant living and entertaining space.



THE VILLAS AT BLUE MOUNTAIN

The Kingfisher Floor Plans and Specifications



- Four spacious bedrooms, all with ensuite bathrooms
- Great Room vaulted ceiling
- Multi-zone high efficiency central air-conditioning
- Monitored security system with multiple CCTV cameras

- Wiring for high speed internet and satellite TV
- Gourmet kitchen with a suite of GE Monogram appliances, wine cooler, granite counters, walk-in pantry and custom cabinetry

- Outdoor kitchen with stainless steel gas grill and wet bar
- Travertine marble floors throughout
- 10' ceilings where not vaulted
- Kohler Performance showers and Spa tubs

- Dade County hurricane rated windows throughout
- Spanish Tile roof
- Large covered terrace
- Covered parking
- Eco friendly landscaping
- Private full size pool

The interiors of The Kingfisher have been professionally designed by New York/Provo based design firm Fenimore Rosenberg Kolb to capture the essence of your tropical island lifestyle in an elegant and tranquil way.